

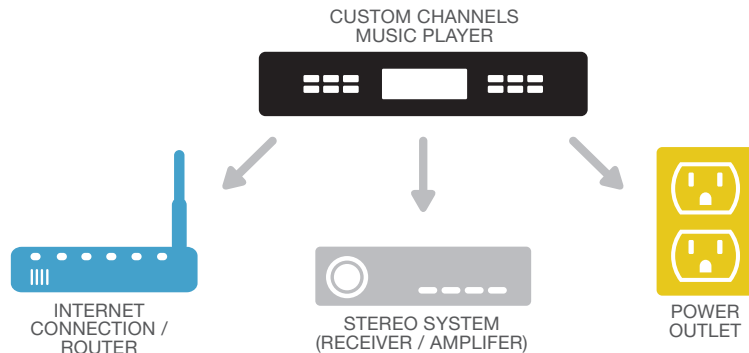
QUICK START GUIDE

Custom Channels Music Player



Plug + Play

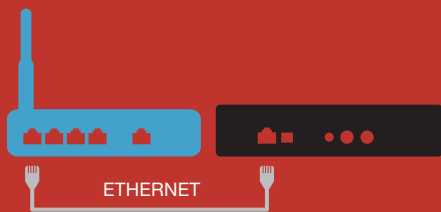
Follow these simple steps to set up your pre-tuned music player with your existing audio system and network.



Enclosed you will find everything you need to get going:

- Music player
- 5V power supply
- Ethernet (Internet) cable
- RCA stereo audio cables

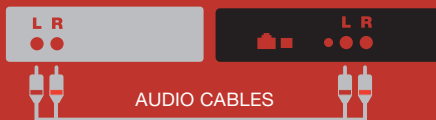
1



Connect to the Internet

- Use ethernet cable to connect music player to Internet connection / router

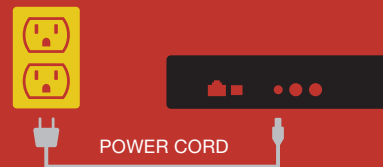
2



Connect to the Amplifier

- One end of audio cable to music player
- Other end of audio cable to AUX or CD Input on amplifier

3



Connect to Power

- Using supplied 5V adapter, connect music player to power
- Press power button on the front, lower right corner of player

That's it. Player may take up to 30 seconds to play music.

Your business is unique, and sometimes setups can be too.
Please visit CustomChannels.net/setup if you:

- Can't get your player to connect to the Internet or play music
- Only have one audio cable to your amplifier (mono connection, not stereo)
- Need advanced networking info (i.e. ports used, firewall setting, etc.)
- Have a different equipment setup than described in this guide

How to change channels:



CHANNEL PRESETS 1-5

CHANNEL UP-DOWN

Customize your channel
presets online at:
CustomChannels.net

 **WEB**
CustomChannels.net/setup

 **EMAIL**
support@CustomChannels.net

 **CustomChannels**
Beyond Background Music